

With just one slide,
measure the mRNA
expression of 470
biomarkers.



Product Overview

Enhance your immunohistochemistry with HTG's new sequencing-based assay for mRNA gene expression

The HTG EdgeSeq PATH Assay has been designed for retrospective gene expression profiling to complement traditional immunohistochemistry (IHC) testing by allowing investigators to assess mRNA expression of large numbers of markers when tissue availability is limited. The assay includes 470 mRNA targets, including predictive, prognostic, immune and other emerging biomarkers. The assay enables a wide variety of applications, including pre-screening of samples to guide subsequent testing and development of novel gene signatures.

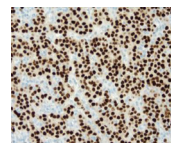
Features and Benefits

- Simultaneous, quantitative detection of 470 transcripts:
including those typically assessed by IHC
- Extraction-free:
reduce extraction-associated data bias and sample loss
- Reliable, reproducible performance:
from a formalin-fixed, paraffin-embedded (FFPE) needle core biopsy section

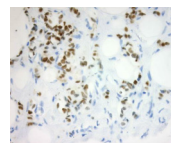
Potential Applications

Measure gene expression levels with the HTG EdgeSeq PATH Assay that can assess 470 genes using a 5 μ m FFPE tissue section. This assay can:

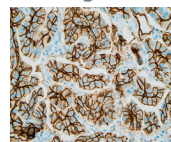
- Serve as a complement to IHC interpretation of results
- Provide additional information when sample amount is limited



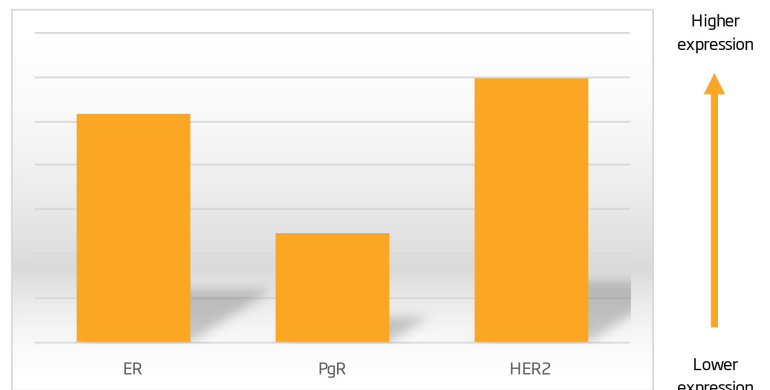
ER



PgR



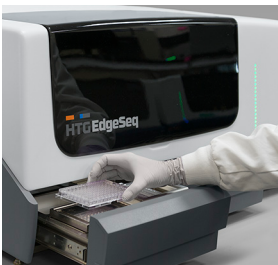
HER2



Ordering Information

Catalog Number	Samples per Run	Product Description
916-008-208	8	2 plates, 8 samples per plate
916-008-008	8	4 plates, 8 samples per plate
916-008-224	24	1 plate, 24 samples per plate
916-008-024	24	4 plates, 24 samples per plate
916-008-096	96	1 plate, 96 samples per plate

- Extraction-free and fully automated workflow on the HTG EdgeSeq system
- One assay provides gene expression status of 470 biomarkers
- Use a 5 µm FFPE tissue section



Partner with HTG

HTG EdgeSeq System

HTG offers automated workflow solutions for molecular profiling that can be deployed in your laboratory to help address the unique needs and challenges through every step of your project.

VERI/O Laboratory Services

VERI/O Laboratory Services support biomarker research and companion diagnostic development using HTG's extraction-free technology and growing portfolio of profiling assays. Results are provided for retrospective samples and are not for use in diagnostic procedures.

HTG Preferred Service Providers

HTG has partnered with several preferred service provider laboratories that provide profiling services using HTG EdgeSeq systems and assays.

Learn More

The HTG EdgeSeq system has a number of key advantages, including multiplexing from tens to thousands of biomarkers in a single sample; very low sample input requirements; simple, extraction-free sample preparation; automated workflow; and simplified data output.

The HTG EdgeSeq system is a powerful solution providing gene expression profiling results for researchers, laboratory staff and biomarker leads pursuing discovery, translational medicine, and other oncology applications.

For more information contact HTG Molecular Diagnostics at 1-877-289-2615, info@htgmolecular.com or contact your local HTG Molecular Diagnostics representative. Visit www.htgmolecular.com.