

ORIGINAL ARTICLE

# Palbociclib in combination with endocrine therapy versus capecitabine in hormonal receptor-positive, human epidermal growth factor 2-negative, aromatase inhibitor-resistant metastatic breast cancer: a phase III randomised controlled trial—PEARL<sup>☆</sup>

M. Martín<sup>1,2,3\*†</sup>, C. Zielinski<sup>4,5†</sup>, M. Ruiz-Borrego<sup>3,6</sup>, E. Carrasco<sup>3</sup>, N. Turner<sup>7</sup>, E. M. Ciruelos<sup>3,8,9,10</sup>, M. Muñoz<sup>3,11,12</sup>, B. Bermejo<sup>2,3,13,14</sup>, M. Margeli<sup>3,15</sup>, A. Anton<sup>2,3,16</sup>, Z. Kahan<sup>17</sup>, T. Csösz<sup>18</sup>, M. I. Casas<sup>3</sup>, L. Murillo<sup>3,19</sup>, S. Morales<sup>3,20</sup>, E. Alba<sup>2,3,21</sup>, E. Gal-Yam<sup>22</sup>, A. Guerrero-Zotano<sup>3,23</sup>, L. Calvo<sup>3,24</sup>, J. de la Haba-Rodríguez<sup>2,3,25</sup>, M. Ramos<sup>3,26</sup>, I. Álvarez<sup>3,27</sup>, A. García-Palomo<sup>3,28</sup>, C. Huang Bartlett<sup>29</sup>, M. Koehler<sup>29,30</sup>, R. Caballero<sup>3</sup>, M. Corsaro<sup>31</sup>, X. Huang<sup>29</sup>, J. A. García-Sáenz<sup>3,32</sup>, J. I. Chacón<sup>3,33</sup>, C. Swift<sup>34</sup>, C. Thallinger<sup>5,35</sup> & M. Gil-Gil<sup>3,36</sup>

<sup>1</sup>Medical Oncology, Instituto de Investigación Sanitaria Gregorio Marañón, Medicine Department, Universidad Complutense, Madrid; <sup>2</sup>Oncology Biomedical Research National Network (CIBERONC-ISCI), Madrid; <sup>3</sup>GEICAM Spanish Breast Cancer Group, Madrid, Spain; <sup>4</sup>Medical Oncology, Central European Cancer Center, Wiener Privatlinik Hospital, Vienna; <sup>5</sup>CECOG Central European Cooperative Oncology Group, Vienna, Austria; <sup>6</sup>Medical Oncology, Hospital Universitario Virgen del Rocío, Sevilla, Spain; <sup>7</sup>Institute of Cancer Research and Royal Marsden, London, UK; <sup>8</sup>Medical Oncology, Hospital Universitario 12 de Octubre, Madrid; <sup>9</sup>Medical Oncology, HM Hospitales Madrid, Madrid; <sup>10</sup>SOLTI Group on Breast Cancer Research, Barcelona; <sup>11</sup>Medical Oncology, Hospital Clinic de Barcelona, Barcelona; <sup>12</sup>Translational Genomics and Targeted Therapeutics in Solid Tumors (IDIBAPS), Barcelona; <sup>13</sup>Medical Oncology, Hospital Clínico Universitario de Valencia, Valencia; <sup>14</sup>Biomedical Research Institute INCLIVA, Valencia; <sup>15</sup>B-ARGO Group, Catalan Institute of Oncology, Hospital Universitari Germans Trias i Pujol, Badalona; <sup>16</sup>Medical Oncology, Hospital Universitario Miguel Servet, Zaragoza, Spain; <sup>17</sup>Department of Oncotherapy, University of Szeged, Szeged; <sup>18</sup>Department of Oncology, Jasz-Nagykun-Szolnok Megyei Hetenyi Geza Korhaz-Rendelőintezet, Szolnok, Hungary; <sup>19</sup>Medical Oncology, Hospital Clínico de Zaragoza Lozano Blesa, Zaragoza; <sup>20</sup>Medical Oncology, Hospital Universitario Arnau de Vilanova, Lleida; <sup>21</sup>UGCI Medical Oncology, Hospitales Regional y Virgen de la Victoria, IBIMA, Málaga, Spain; <sup>22</sup>Department of Oncology, Institute of Oncology, Sheba Medical Center, Tel-Hashomer, Israel; <sup>23</sup>Medical Oncology, Instituto Valenciano de Oncología, Valencia; <sup>24</sup>Medical Oncology, Complejo Hospitalario A Coruña, Coruña; <sup>25</sup>Medical Oncology, Hospital Universitario Reina Sofía, Córdoba; Instituto Maimonides de Investigación Biomédica (IMIBIC); Universidad de Córdoba, Córdoba; <sup>26</sup>Centro Oncológico de Galicia, A Coruña, Coruña; <sup>27</sup>Medical Oncology, Hospital Universitario Donostia-Biodonostia, San Sebastián; <sup>28</sup>Medical Oncology, Hospital de León, León, Spain; <sup>29</sup>Pfizer, New York, USA; <sup>30</sup>Repare Therapeutics, Cambridge, USA; <sup>31</sup>Pfizer, Milano, Italy; <sup>32</sup>Medical Oncology, Hospital Clínico Universitario San Carlos, Madrid; <sup>33</sup>Medical Oncology, Hospital Virgen de la Salud, Toledo, Spain; <sup>34</sup>Ralph Lauren Centre for Breast Cancer Research, Royal Marsden, London, UK; <sup>35</sup>Department of Oncology, Medical University of Vienna, Department of Oncology, Vienna, Austria; <sup>36</sup>Institut Català d'Oncologia (ICO) & IDIBELL, L'Hospitalet, Barcelona, Spain



Available online 29 December 2020

**Background:** Palbociclib plus endocrine therapy (ET) is the standard treatment of hormone receptor-positive and human epidermal growth factor receptor 2-negative, metastatic breast cancer (MBC). However, its efficacy has not been compared with that of chemotherapy in a phase III trial.

**Patients and methods:** PEARL is a multicentre, phase III randomised study in which patients with aromatase inhibitor (AI)-resistant MBC were included in two consecutive cohorts. In cohort 1, patients were randomised 1 : 1 to palbociclib plus exemestane or capecitabine. On discovering new evidence about estrogen receptor-1 (*ESR1*) mutations inducing resistance to AIs, the trial was amended to include cohort 2, in which patients were randomised 1 : 1 between palbociclib plus fulvestrant and capecitabine. The stratification criteria were disease site, prior sensitivity to ET, prior chemotherapy for MBC, and country of origin. Co-primary endpoints were progression-free survival (PFS) in cohort 2 and in wild-type *ESR1* patients (cohort 1 + cohort 2). *ESR1* hotspot mutations were analysed in baseline circulating tumour DNA.

**Results:** From March 2014 to July 2018, 296 and 305 patients were included in cohort 1 and cohort 2, respectively. Palbociclib plus ET was not superior to capecitabine in both cohort 2 [median PFS: 7.5 versus 10.0 months; adjusted

\*Correspondence to: Professor Miguel Martín, Medical Oncology, Instituto de Investigación Sanitaria Gregorio Marañón, CIBERONC-ISCI GEICAM Spanish Breast Cancer Group, Doctor Esquerdo, 46, Madrid, Spain, 28007. Tel: +34-91659-28-70  
E-mail: [mmartin@geicam.org](mailto:mmartin@geicam.org) (M. Martín).

† These authors contributed equally to this study.

<sup>☆</sup> This study has been previously presented at San Antonio Breast Cancer Symposium; 10-14 December 2019; San Antonio, TX, Philadelphia (PA): AACR; Published at *Cancer Res* 2020;80(4 Suppl): Abstract number GS2-07. *Cancer Res* February 14 2020;80 (4 Supplement) GS2-07-GS2-07; <https://doi.org/10.1158/1538-7445.SABCS19-GS2-07> Published February 2020. Final PFS results were presented as a poster discussion at the American Society of Clinical Oncology (ASCO) virtual meeting and the quality-of-life data has been presented as a poster at the virtual European Society of Medical Oncology (ESMO) Breast Cancer Meeting.

0923-7534/© 2020 The Author(s). Published by Elsevier Ltd on behalf of European Society for Medical Oncology. This is an open access article under the CC BY-NC-ND license (<http://creativecommons.org/licenses/by-nc-nd/4.0/>).

hazard ratio (aHR): 1.13; 95% confidence interval (CI): 0.85-1.50] and wild-type *ESR1* patients (median PFS: 8.0 versus 10.6 months; aHR: 1.11; 95% CI: 0.87-1.41). The most frequent grade 3-4 toxicities with palbociclib plus exemestane, palbociclib plus fulvestrant and capecitabine, respectively, were neutropenia (57.4%, 55.7% and 5.5%), hand/foot syndrome (0%, 0% and 23.5%), and diarrhoea (1.3%, 1.3% and 7.6%). Palbociclib plus ET offered better quality of life (aHR for time to deterioration of global health status: 0.67; 95% CI: 0.53-0.85).

**Conclusions:** There was no statistical superiority of palbociclib plus ET over capecitabine with respect to PFS in MBC patients resistant to AIs. Palbociclib plus ET showed a better safety profile and improved quality of life.

**Key words:** palbociclib, capecitabine, metastatic breast cancer, hormone receptor-positive, HER2-negative, endocrine therapy

## INTRODUCTION

Until recently, single-agent endocrine therapy (ET) was the recommended choice of treatment of most women with hormone receptor-positive and human epidermal growth factor receptor 2 (HER2)-negative metastatic breast cancer (MBC). Unfortunately, not all patients respond to ET due to primary or acquired resistance. In the past decade, new targeted therapies, mainly cyclin-dependent kinase 4/6 (CDK4/6) inhibitors, in combination with ET have significantly improved progression-free survival (PFS)<sup>1-7</sup> and overall survival (OS)<sup>8-10</sup> compared with ET alone in patients with treatment-naïve or pretreated MBC.

The PALOMA-3 trial<sup>4</sup> showed that palbociclib plus fulvestrant significantly improved PFS as opposed to fulvestrant plus placebo [hazard ratio (HR): 0.46;  $P < 0.0001$ ] in patients who experienced cancer relapse or progression during or within 12 months of completing adjuvant ET or while they were on ET or within 1 month of prior ET for MBC. Consequently, palbociclib plus fulvestrant was approved by the Food and Drug Administration and the European Medicines Agency for these patients. That trial showed that adding palbociclib to fulvestrant significantly delayed disease progression compared with fulvestrant alone in patients resistant to aromatase inhibitors (AIs). However, we still considered it necessary to analyse the efficacy differences between palbociclib plus ET and other current standards of care in MBC patients resistant to AIs, such as chemotherapy.

In 2014, the GEICAM Spanish Breast Cancer Group started the PEARL trial in collaboration with the Central European Cooperative Oncology Group (CECOG). This trial compared palbociclib plus ET with capecitabine in a population of postmenopausal patients very similar to those in the PALOMA-3 trial. We selected capecitabine as the chemotherapy agent as it is considered to be one of the most active drugs available for MBC, with median PFS ranging from 2.8 to 5.9 months (which was even higher in patients with hormone receptor-positive disease) and OS times of 9.3-18.1 months in previously treated MBC patients.<sup>11-14</sup> We combined palbociclib with exemestane in the initial study design; however, after the emerging evidence that patients pretreated with AIs may develop *ESR1* mutations that generate resistance to AIs, we introduced a second cohort in which palbociclib was combined with fulvestrant.<sup>15,16</sup>

## METHODS

### Study design

The PEARL trial (clinical trial registration number: [ClinTrials.gov](https://doi.org/10.1186/1745-7581-17-10) reference NCT02028507), a multicentre, international, open-label, controlled, randomised phase III study with two successive cohorts of similar characteristics, was carried out in four countries (37 sites): Spain (GEICAM), Austria, Hungary, and Israel (CECOG). Cohort 1 patients were randomised 1 : 1 to receive palbociclib (125 mg/day for 3 weeks followed by 1 week off) plus exemestane (25 mg/day) or capecitabine [according to the approved label: 2500 mg/m<sup>2</sup>/day (2000 mg/m<sup>2</sup>/day in patients aged >70 years old) for 2 weeks followed by 1 week off]. The study hypothesis endorsed the superiority of palbociclib plus exemestane over capecitabine (expected PFS, HR: 0.686, with a 5% significance level). In December 2015, new data suggested that exemestane in patients who have progressed on AIs could be a suboptimal option because *ESR1* mutations may confer AI therapy resistance in patients previously exposed to AIs (with a frequency of mutations of 29%-37%).<sup>15-17</sup> One of the studies suggested that fulvestrant may be effective in patients with *ESR1* mutation-positive tumours.<sup>16</sup> In May 2016, a protocol amendment with a modification of trial design and objectives was approved before any efficacy data were available. Therefore, a subsequent cohort 2 was introduced, in which patients were randomised 1 : 1 to receive palbociclib (same schedule as cohort 1) plus fulvestrant (500 mg intramuscular injection on days 1 and 15 of cycle 1; then on day 1 of subsequent 28-day cycles) or capecitabine (same schedule as cohort 1). At that time, 296 patients were already recruited in cohort 1 (from an initial planned sample of 348 patients). The new study hypotheses endorsed the superiority of palbociclib plus fulvestrant over capecitabine and palbociclib plus ET over capecitabine in patients with wild-type *ESR1* (expected PFS, HR: 0.667, with a 5% significance level) ([Supplementary Material S1](https://doi.org/10.1016/j.annonc.2020.12.013), available at <https://doi.org/10.1016/j.annonc.2020.12.013>).

Randomisation was carried out centrally at the GEICAM headquarters. In both the cohorts, stratification criteria were disease site (visceral/non-visceral), sensitivity to prior ET [relapse after 24 months of adjuvant ET or response (complete or partial) or stabilisation after 24 weeks of the most recent ET in the context of advanced disease (yes/

no)], prior chemotherapy for MBC (yes/no), and country of origin. The treatment continued until either objective disease progression, according to the RECIST v1.1,<sup>18</sup> symptomatic deterioration, unacceptable toxicity, death, or withdrawal of consent, whichever occurred first. As-per-protocol dose reductions of palbociclib and capecitabine were allowed in case of toxicity. Upon completion of the study treatment, patients were monitored for survival every 6 months.

Research protocol was approved by every site's institutional review board and every country's regulatory agency. All the patients signed written informed consents. Safety and efficacy data were continuously evaluated by an independent data monitoring committee. The data were analysed by a statistician employed by GEICAM.

### Patients

Postmenopausal women with hormone receptor-positive and HER2-negative AI-resistant MBC (defined as recurrence: while on or within 12 months after the end of adjuvant treatment or progression; while on or within 1 month after the end of treatment of advanced disease) were included. Patients had to have measurable disease assessable by computed tomography (CT)/magnetic imaging resonance (MRI) according to RECIST v1.1 or at least one lytic or mixed bone lesion. One chemotherapy line for MBC was permitted. Additional inclusion criteria included Eastern Cooperative Oncology Group performance status (ECOG) of 0 or 1, life expectancy of 12 weeks or more, and adequate organ function.

Patients who received prior treatment with CDK4/6, mammalian target of rapamycin (mTOR) or phosphoinositide 3-kinase (PI3K) inhibitors, capecitabine, or patients with visceral crisis were excluded. Patients were required to have a corrected QT interval (QTc) <480 ms and no family or personal history of long or short QT syndrome, Brugada syndrome, Torsade de Pointes, or known history of QTc prolongation.

### Trial assessments

Baseline disease assessments (carried out within 4 weeks before randomisation), required a CT or MRI scan of the chest, abdomen, and pelvis. Assessments were carried out every 8 weeks for 120 weeks and then every 12 weeks until documented progressive disease, initiation of a new anti-cancer therapy, or patient dropout. Patients who discontinued study treatment for reasons other than progressive disease had tumour assessments every 12 weeks.

Haematology and biochemistry tests were carried out before each cycle; haematology testing was additionally carried out on day 14 of cycles 1 and 2 in the palbociclib arms. Adverse events (AEs) were assessed and graded at each cycle according to National Cancer Institute common terminology criteria for adverse events (NCI-CTCAE) version 4.0.

Patients completed the European Organization for Research and Treatment of Cancer core quality-of-life (EORTC QLQ-C30; v3.0),<sup>19</sup> BC-specific (EORTC QLQ-BR23; v1.0),<sup>20</sup> and the EuroQoL Health Utilities Index EQ-5D-3L<sup>21</sup> questionnaires at baseline, at every two cycles for the first seven cycles, then at every three cycles until the end of treatment, and once again at the visit after treatment.

Patients were required to have a mandatory plasma sample drawn for exploratory biomarker analyses in circulating tumour DNA (ctDNA) obtained before treatment onset. With the protocol amendment to include cohort 2, the *ESR1* mutational status assessment was a predefined analysis required to evaluate the primary objective of the study. The results were blinded to patients and investigators (Supplementary Material S2, available at <https://doi.org/10.1016/j.annonc.2020.12.013>).

In addition, formalin-fixed paraffin-embedded tumour samples were collected before study entry to genetically identify intrinsic BC subtypes (Luminal A and B, HER2-enriched, basal-like, and normal-like) using the HTG Edge-Seq Oncology Biomarker Panel (Supplementary Material S3, available at <https://doi.org/10.1016/j.annonc.2020.12.013>).

### Objectives and endpoints

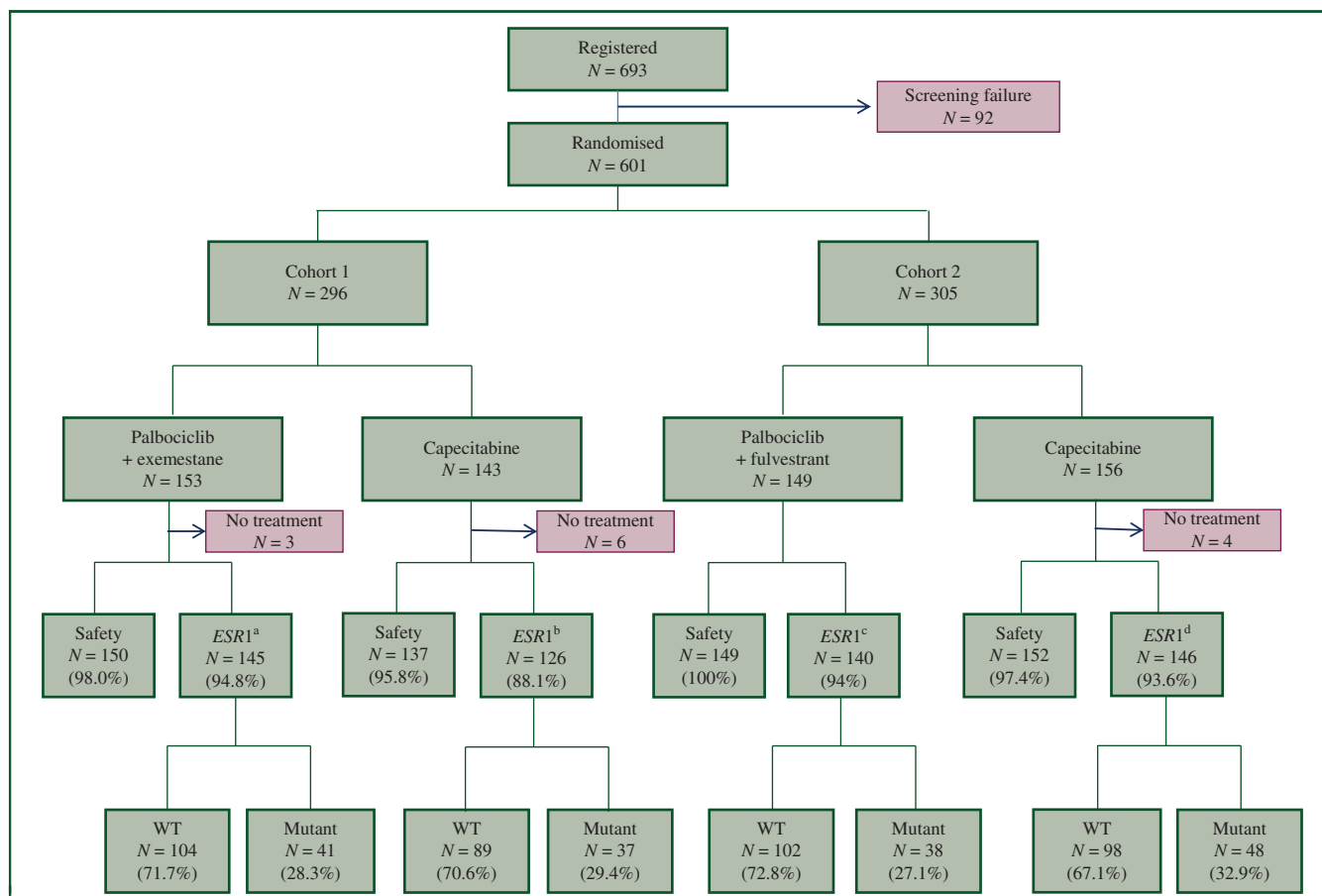
The initial primary objective was to compare PFS with palbociclib plus exemestane and that with capecitabine treatment. After the protocol amendment to include cohort 2, the two new co-primary objectives were to compare PFS of patients treated with (i) palbociclib plus fulvestrant versus capecitabine regardless of *ESR1* mutational status and (ii) palbociclib plus ET (exemestane or fulvestrant) versus capecitabine in patients with wild-type *ESR1* in ctDNA at study entry. PFS was defined as the time from randomisation to the first documentation of progressive disease based on investigators' assessments according to RECIST v1.1 or to death from any cause.

Secondary objectives included, among others, PFS with palbociclib plus ET versus capecitabine regardless of *ESR1* mutational status, objective response rate (ORR), clinical benefit rate (CBR) (defined as ORR plus stable disease rate of at least 24 weeks duration), response duration (RD), OS, safety, and patient-reported outcomes (PROs). Concerning PROs, we reported the time to deterioration for the global health status from the EORTC QLQ-C30, defined as the time from randomisation to first detection of a deterioration event (marked with a decrease of  $\leq 10$  points from the baseline).

Additionally, we explored the independent prognostic and predictive value of intrinsic subtypes.

### Statistical analysis

A total of 193 PFS events were required in cohort 2 to have 80% power to detect a difference between capecitabine (estimated median PFS of 6 months) and palbociclib plus fulvestrant (median PFS of 9 months<sup>4</sup>), for an HR of 0.667, with a 5% significance level. The target sample size was 300 patients. To detect the same difference between



**Figure 1. Consort diagram.**

*ESR1*, estrogen receptor 1; WT, wild-type *ESR1*.

<sup>a</sup> No treatment *n* = 2 and sample not available *n* = 6.

<sup>b</sup> No treatment *n* = 6 and sample not available *n* = 11.

<sup>c</sup> Sample not available *n* = 9.

<sup>d</sup> No treatment *n* = 3 and sample not available *n* = 7.

capecitabine and palbociclib plus ET in patients with wild-type *ESR1* and assuming an 80% ctDNA collection/detection rate and 30% of the patients with *ESR1* mutations, the required sample size was also 300 patients. The study was designed to have two interim analyses and a final analysis. The final PFS analysis was planned when 193 events in cohort 2 were observed. A modification of Hochberg's method<sup>22</sup> was used for two primary treatment comparisons to provide the control of experiment-wise type 1 error rate at a two-sided 5% significance level.

The Kaplan–Meier method was used to estimate the median PFS; 95% confidence intervals (CIs) were provided for estimates of interest. The Cox proportional-hazards model was used to calculate the unadjusted and adjusted HR (aHR) (by stratification factors and number of involved sites) and 95% CI. Efficacy analyses were based on two populations: all randomised patients [intention-to-treat (ITT) population] and all randomised patients with wild-type *ESR1* in ctDNA at study entry (wild-type *ESR1* population). Safety analysis was carried out on all patients who received one or more dose of study therapy. PROs analysis was carried out on patients with baseline and one or more

quality of life (QoL) questionnaires completed. Time to deterioration was analysed using Cox regression models.

## RESULTS

### Patients and treatment

A total of 601 patients were included in this study from March 2014 to July 2018. Cohort 1 included 296 patients (153 on palbociclib plus exemestane and 143 on capecitabine) and cohort 2 included 305 patients (149 on palbociclib plus fulvestrant and 156 on capecitabine). Efficacy analyses included all patients, but safety analyses excluded 13 patients (10 on capecitabine and 3 on palbociclib plus ET) never receiving study treatment. *ESR1* mutations were assessed in 557 patients (92.7%), 91% of who were from the capecitabine arms and 94% were from the palbociclib plus ET arms; 164 of them (29%) had *ESR1* mutations (Figure 1).

All the baseline demographics and disease characteristics were balanced between the arms across both the cohorts, except for the number of involved sites (greater in the capecitabine arm in cohort 2) (Table 1).

| Table 1. Patients' baseline characteristics (intention-to-treat population) |                                |                |         |                                 |                |                             |
|---|--------------------------------|----------------|---------|---------------------------------|----------------|-----------------------------|
| Variables   | Cohort 1                       |                |         | Cohort 2                        |                |                             |
|   | Palbociclib plus<br>exemestane | Capecitabine   | P value | Palbociclib plus<br>fulvestrant | Capecitabine   | P value                     |
|   | n = 153                        | n = 143        |         | n = 149                         | n = 156        |                             |
| <b>Demographics and disease characteristics</b>                             |                                |                |         |                                 |                |                             |
| <b>Median age, years (range)</b>  | 60 (31-89)                     | 60 (38-87)     | 0.5574  | 62 (38-86)                      | 60 (33-85)     | 0.2618                      |
| <b>ECOG performance status<sup>c</sup>, n (%)</b>                           |                                |                |         |                                 |                |                             |
| 0   | 85 (55.6)                      | 84 (58.7)      | 0.5800  | 90 (60.4)                       | 93 (59.6)      | 0.8884                      |
| 1   | 68 (44.4)                      | 59 (41.3)      |         | 59 (39.6)                       | 63 (40.4)      |                             |
| <b>Visceral disease, n (%)</b>  |                                |                |         |                                 |                |                             |
| Yes   | 103 (67.3)                     | 94 (65.7)      | 0.8379  | 97 (65.1)                       | 102 (65.4)     | 0.9585                      |
| No  | 50 (32.7)                      | 48 (33.6)      |         | 52 (34.9)                       | 54 (34.6)      |                             |
| <b>Most frequent disease sites, n (%)</b>                                   |                                |                |         |                                 |                |                             |
| Bone  | 107 (69.9)                     | 101 (70.6)     | 0.8960  | 97 (65.1)                       | 114 (73.1)     | 0.1316                      |
| Liver   | 67 (43.8)                      | 61 (42.7)      | 0.8441  | 60 (40.3)                       | 68 (43.6)      | 0.5569                      |
| Breast/skin/subcutaneous/lymph node   | 62 (40.5)                      | 72 (50.3)      | 0.0896  | 63 (42.3)                       | 84 (53.8)      | <b>0.0433<sup>a,b</sup></b> |
| Lung  | 44 (28.8)                      | 38 (26.6)      | 0.6747  | 40 (26.8)                       | 44 (28.2)      | 0.7905                      |
| Pleura  | 19 (12.4)                      | 20 (14.0)      | 0.6903  | 12 (8.1)                        | 23 (14.7)      | 0.0669                      |
| <b>Number of involved sites, n (%)</b>                                      |                                |                |         |                                 |                |                             |
| 1   | 47 (30.7)                      | 32 (22.4)      | 0.2196  | 56 (37.6)                       | 35 (22.4)      | <b>0.0147<sup>a</sup></b>   |
| 2   | 62 (40.5)                      | 59 (41.3)      |         | 48 (32.2)                       | 60 (38.5)      |                             |
| ≥3  | 44 (28.8)                      | 51 (35.7)      |         | 45 (30.2)                       | 61 (39.1)      |                             |
| <b>Tumour characteristics</b>   |                                |                |         |                                 |                |                             |
| <b>Hormone receptor status, n (%)<sup>d</sup></b>                           |                                |                |         |                                 |                |                             |
| ER+ PR+   | 114 (74.5)                     | 103 (72.0)     |         | 114 (76.5)                      | 118 (75.6)     |                             |
| ER+ PR-   | 36 (23.5)                      | 38 (26.6)      |         | 33 (22.2)                       | 33 (21.2)      |                             |
| ER- PR+ or ER+ PR not available <sup>e</sup>                                | 2 (1.3)                        | 2 (1.4)        |         | 2 (1.3)                         | 5 (3.2)        |                             |
| <b>ESR1 mutational status, n (%)</b>  |                                |                |         |                                 |                |                             |
| Wild-type   | 104 (68.0)                     | 89 (62.2)      | 0.8434  | 102 (68.5)                      | 98 (62.8)      | 0.2905                      |
| Mutant  | 41 (26.8)                      | 37 (25.9)      |         | 38 (25.5)                       | 48 (30.8)      |                             |
| Not available   | 8 (5.2)                        | 17 (11.9)      |         | 9 (6.0)                         | 10 (6.4)       |                             |
| <b>Sensitivity to prior endocrine therapy, n (%)<sup>f</sup></b>            |                                |                |         |                                 |                |                             |
| Yes   | 107 (69.9)                     | 104 (72.7)     | 0.5956  | 119 (79.9)                      | 122 (78.2)     | 0.7218                      |
| No  | 46 (30.1)                      | 39 (27.3)      |         | 30 (20.1)                       | 34 (21.8)      |                             |
| <b>Genomic subtype, n (%)<sup>g</sup></b>                                   |                                |                |         |                                 |                |                             |
|   | <b>n = 117</b>                 | <b>n = 107</b> |         | <b>n = 112</b>                  | <b>n = 119</b> |                             |
| Luminal A   | 61 (52.1)                      | 61 (57.0)      |         | 58 (51.8)                       | 52 (43.7)      |                             |
| Luminal B   | 49 (41.9)                      | 42 (39.3)      |         | 43 (38.4)                       | 58 (48.7)      |                             |
| HER2-enriched   | 5 (4.3)                        | 4 (3.7)        |         | 11 (9.8)                        | 9 (7.6)        |                             |
| Basal-like  | 2 (1.7)                        | 0              |         | 0                               | 0              |                             |
| <b>Prior therapy</b>  |                                |                |         |                                 |                |                             |
| <b>Number of prior lines of endocrine therapy for MBC, n (%)</b>            |                                |                |         |                                 |                |                             |
| No prior endocrine therapy for MBC  | 30 (19.6)                      | 31 (21.7)      |         | 38 (25.5)                       | 44 (28.2)      |                             |
| 1   | 82 (53.6)                      | 70 (49.0)      |         | 85 (57.0)                       | 90 (57.7)      |                             |
| 2   | 35 (22.9)                      | 34 (23.8)      |         | 12 (8.1)                        | 9 (5.8)        |                             |
| 3   | 3 (2.0)                        | 4 (2.8)        |         | 1 (0.7)                         | 1 (0.6)        |                             |
| Maintenance after chemotherapy  | 3 (2.0)                        | 4 (2.8)        |         | 12 (8.1)                        | 12 (7.7)       |                             |
| <b>Prior endocrine therapy for MBC, n (%)</b>                               |                                |                |         |                                 |                |                             |
| Aromatase inhibitor   | 106 (69.3)                     | 105 (73.4)     | 0.4308  | 111 (74.5)                      | 109 (69.9)     | 0.3679                      |
| Fulvestrant   | 44 (28.8)                      | 35 (24.5)      | 0.4052  | 0                               | 1 (0.6)        | 0.3276                      |
| Other selective estrogen receptor degrader                                  | 0                              | 0              | -       | 2 (1.3)                         | 1 (0.6)        | 0.5350                      |
| Tamoxifen   | 16 (10.5)                      | 17 (11.9)      | 0.6960  | 12 (8.1)                        | 16 (10.3)      | 0.5054                      |
| Luteinising hormone-releasing hormone analogues                             | 10 (6.5)                       | 11 (7.7)       | 0.6986  | 8 (5.4)                         | 14 (9.0)       | 0.2238                      |
| <b>Prior chemotherapy for MBC, n (%)</b>                                    |                                |                |         |                                 |                |                             |
| Yes   | 48 (31.4)                      | 41 (28.7)      | 0.6125  | 41 (27.5)                       | 41 (26.3)      | 0.8079                      |
| No  | 105 (68.6)                     | 102 (71.3)     |         | 108 (72.5)                      | 115 (73.7)     |                             |
| <b>Line at study entry,<sup>h</sup> n (%)</b>                               |                                |                |         |                                 |                |                             |
| 1st line  | 27 (17.6)                      | 31 (21.7)      | 0.5498  | 38 (25.5)                       | 43 (27.6)      | 0.8477                      |
| 2nd line  | 61 (39.9)                      | 50 (35.0)      |         | 76 (51.0)                       | 79 (50.6)      |                             |
| ≥3rd line   | 62 (40.5)                      | 62 (43.3)      |         | 35 (23.5)                       | 34 (21.8)      |                             |

Continued



| Table 1. Continued                        |                                |              |         |                                 |              |         |
|---|--------------------------------|--------------|---------|---------------------------------|--------------|---------|
| Variables                                 | Cohort 1                       |              |         | Cohort 2                        |              |         |
|   | Palbociclib plus<br>exemestane | Capecitabine | P value | Palbociclib plus<br>fulvestrant | Capecitabine | P value |
|   | n = 153                        | n = 143      |         | n = 149                         | n = 156      |         |
| <b>Status at initial diagnosis, n (%)</b> |                                |              |         |                                 |              |         |
| M0  | 127 (83.0)                     | 109 (76.2)   | 0.1469  | 115 (77.2)                      | 120 (76.0)   | 0.9573  |
| M1 ( <i>de novo</i> MBC)                  | 26 (17.0)                      | 34 (23.8)    |         | 34 (22.8)                       | 36 (23.1)    |         |

P value statistically significant.

ER, estrogen receptor; *ESR1*, estrogen receptor 1; ET, endocrine therapy; HER2, human epidermal growth factor receptor 2; Lum, luminal; MBC, metastatic breast cancer; PR, progesterone receptor.

<sup>a</sup> No significant differences in patients' baseline characteristics were identified between treatment groups, except for the number of involved sites and breast/skin/subcutaneous/lymph node disease site in cohort 2.

<sup>b</sup> Hazard ratios were not adjusted by 'breast/skin/subcutaneous/lymph node' as disease site, because this item is included within stratification factor (visceral versus non-visceral).

<sup>c</sup> Eastern Cooperative Oncology Group (ECOG) performance status scores range from 0 to 5, with 0 indicating no symptoms and higher scores indicating greater disability.

<sup>d</sup> Based on local laboratory determination, positive defined as  $\geq 1\%$  positive cells by immunohistochemistry for ER and/or PR. Hormone receptor status was evaluated on primary tumours in 62.1% of patients and on metastatic lesions in 37.9% of them.

<sup>e</sup> One patient treated with exemestane + palbociclib was triple-negative (protocol deviation).

<sup>f</sup> Sensitivity to prior endocrine therapy was defined as relapse after 24 months of adjuvant ET or response (complete or partial) or stabilisation after 24 weeks of the most recent ET in the context of advanced disease.

<sup>g</sup> By HTG EdgeSeq Oncology Biomarker Panel.

<sup>h</sup> Line at study entry means the treatment line received in the study, considering all prior lines of therapy, either chemotherapy and/or endocrine therapy.

At the cut-off date for the primary analysis (14 January 2019), 80 patients were still on the study treatment: 10 (6.7%) were on palbociclib plus exemestane, 37 (24.8%) on palbociclib plus fulvestrant, and 33 (11%) on capecitabine. The median relative dose-intensity in cohort 1 was 82.6% for capecitabine, 100% for exemestane, and 95.2% for palbociclib, and that in cohort 2 was 79.5% for capecitabine, 100% for fulvestrant, and 92.9% for palbociclib. The median time on study therapy in cohort 1 was higher for capecitabine, 7.9 months (range: 0.2-50.5), than for palbociclib plus exemestane, 6.3 months (range: 0.5-52.3). However, in cohort 2 the median time on study therapy was 6.3 months for capecitabine (range: 0.2-26.4) and 7.8 months for palbociclib plus fulvestrant (range: 0.8-31.1). The main reason for permanent discontinuation of the treatment was disease progression. In both cohorts, the proportion of patients who discontinued due to progressive disease was smaller in the capecitabine arm (65.7% in cohort 1, 58.6% in cohort 2) than in the palbociclib plus exemestane (81.3%) and palbociclib plus fulvestrant arms (68.5% in cohort 2) (Supplementary Table S1, available at <https://doi.org/10.1016/j.annonc.2020.12.013>).

### Efficacy

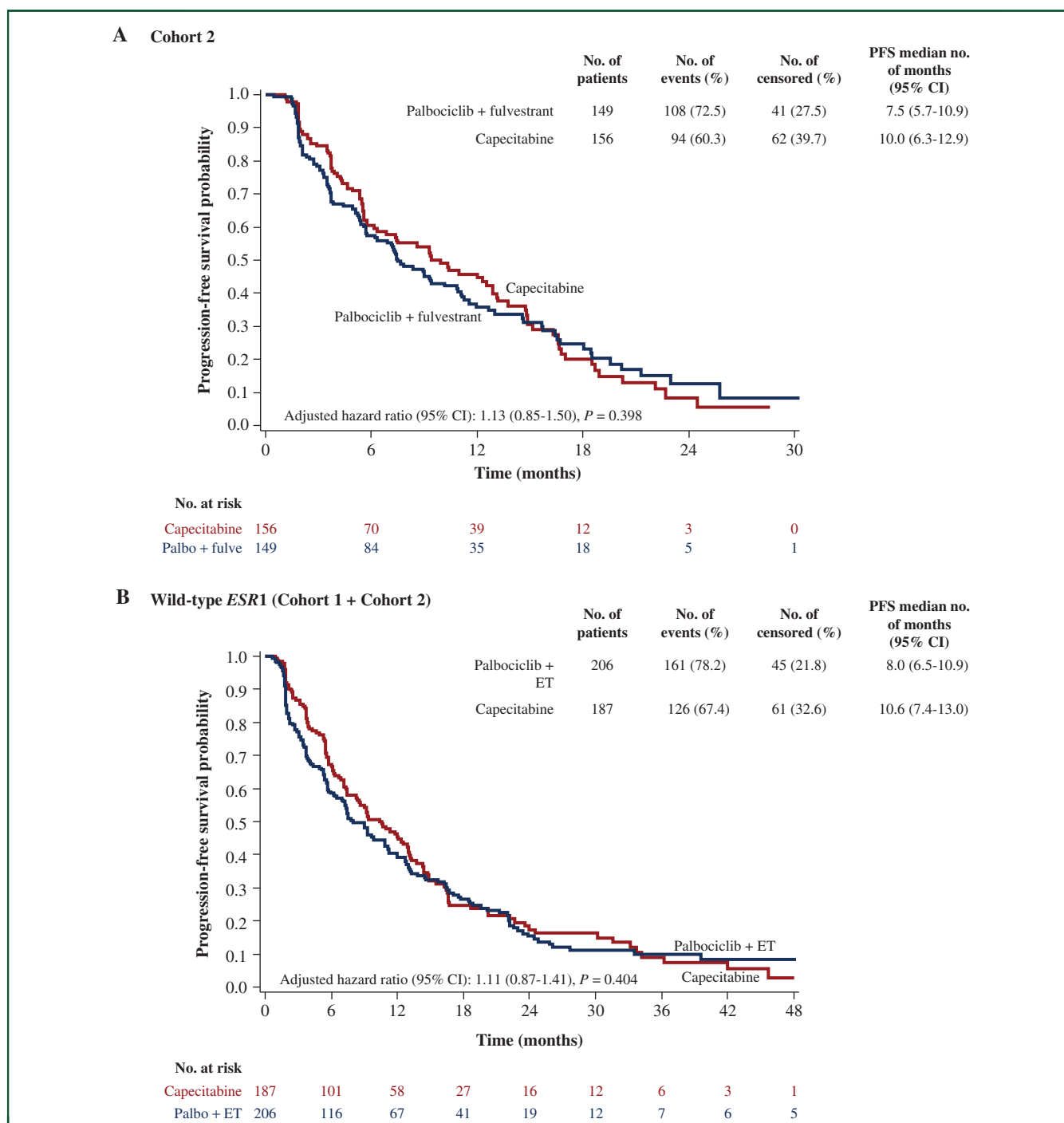
The median follow-ups of cohort 2 and the wild-type *ESR1* population were 13.5 months (range: 0.0-30.7) and 18.9 months (range: 0.0-56.3), respectively. The median PFS in cohort 2 was 7.5 months (95% CI: 5.7-10.9) in the palbociclib plus fulvestrant arm and 10.0 months (95% CI: 6.3-12.9) in the capecitabine arm (aHR: 1.13; 95% CI: 0.85-1.50;  $P = 0.398$ ). The median PFS in the wild-type *ESR1* population was 8.0 months (95% CI: 6.5-10.9) in the palbociclib plus ET arm and 10.6 months (95% CI: 7.4-13.0) in the capecitabine arm (aHR: 1.11; 95% CI: 0.87-1.41;  $P = 0.404$ ) (Figure 2). PFS subgroup analyses by stratification factors and other baseline characteristics in cohort 2 and in the

wild-type *ESR1* population (Figure 3), as well as in the overall population regardless of *ESR1* mutational status (Supplementary Figure S1, available at <https://doi.org/10.1016/j.annonc.2020.12.013>) confirmed the non-superiority of palbociclib plus ET over capecitabine.

Regarding the study's secondary endpoints of efficacy, the median PFS in all patients from cohort 1 and cohort 2 was 7.4 months (95% CI: 5.9-9.3) in the palbociclib plus ET arm and 9.4 months (95% CI: 7.5-11.3) in the capecitabine arm (aHR: 1.11; 95% CI: 0.92-1.34;  $P = 0.380$ ) (Supplementary Figure S2, available at <https://doi.org/10.1016/j.annonc.2020.12.013>). The aHR for PFS in the mutant *ESR1* population was 1.12 (95% CI: 0.78-1.60;  $P = 0.540$ ) as shown in Supplementary Figure S3, available at <https://doi.org/10.1016/j.annonc.2020.12.013>. The ORR in cohort 2 was 26.7% for palbociclib plus fulvestrant versus 33.3% for capecitabine. In patients with *ESR1* wild-type, ORR was 27.8% for palbociclib plus ET versus 36.9% for capecitabine. The CBR was very similar between the arms in cohort 2 and the patients with *ESR1* wild-type. The median RD in cohort 2 was 9.4 months in the palbociclib plus fulvestrant arm and 12.9 months in the capecitabine arm (HR: 0.69; 95% CI: 0.33-1.46;  $P = 0.335$ ). Finally, the median RD in the wild-type *ESR1* population was 9.7 months in the palbociclib plus ET arm and 11.2 months in the capecitabine arm (HR: 0.75; 95% CI: 0.44-1.25;  $P = 0.269$ ) (Supplementary Table S2, available at <https://doi.org/10.1016/j.annonc.2020.12.013>).

### PROs

The completion rate of the questionnaires was similar across the arms, surpassing 82% until cycle 13. The median time to deterioration in global health status was 8.6 months in patients treated with palbociclib plus ET versus 6.2 months in those treated with capecitabine (aHR: 0.67, 95% CI: 0.53-0.85;  $P = 0.001$ ) (Figure 4).



**Figure 2. Progression-free survival.**

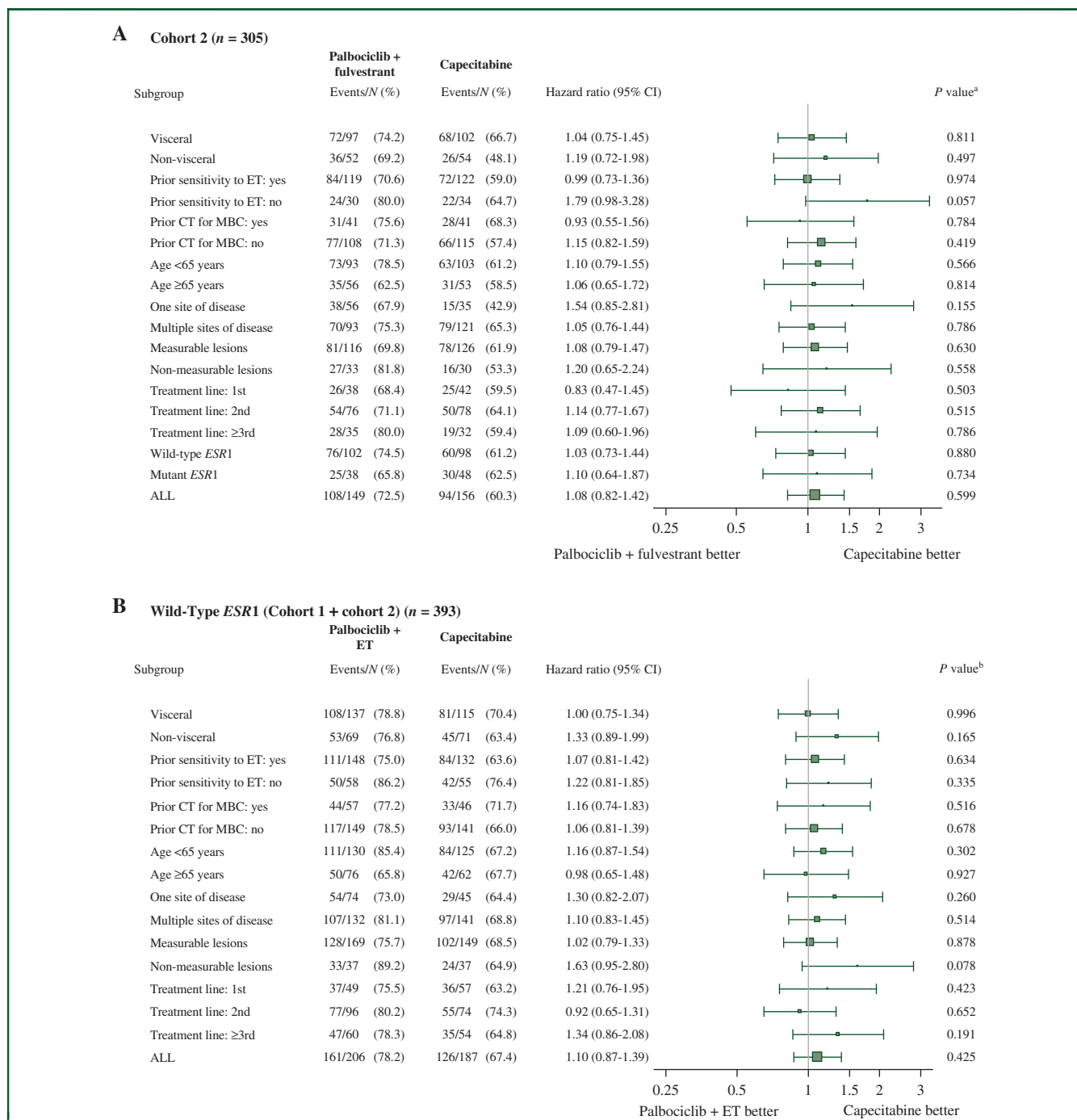
Kaplan–Meier curves for PFS were represented for (A) patients in cohort 2: palbociclib plus fulvestrant versus capecitabine and (B) patients with wild-type *ESR1* from cohort 1 + cohort 2: palbociclib plus endocrine therapy versus capecitabine. Hazard ratios were adjusted by disease site, prior sensitivity to endocrine therapy, prior chemotherapy for metastatic breast cancer, and the number of involved sites.

CI, confidence interval; *ESR1*, estrogen receptor 1; ET, endocrine therapy; fulve, fulvestrant; No, number; Palbo, palbociclib; PFS, progression-free survival.

## Safety

Safety information is shown in Table 2 and Supplementary Table S3, available at <https://doi.org/10.1016/j.annonc.2020.12.013>. The most frequent grade 3-4 toxicities in the palbociclib plus exemestane, palbociclib plus fulvestrant, and capecitabine arms, were neutropenia [(57.4%, 55.7%, 5.5%, respectively) with febrile neutropenia (1.3%, 0.7%,

1.4%, respectively)], hand/foot syndrome (0%, 0%, 23.5%, respectively), diarrhoea (1.3%, 1.3%, 7.6%, respectively), fatigue (1.3%, 0.7%, 5.5%, respectively), and anaemia (0.7%, 2.0%, 3.5%, respectively). The incidence of non-haematologic toxicity grade  $\geq 3$  was higher for patients on capecitabine (38.8%) than for those on palbociclib plus exemestane (6.7%) or palbociclib plus fulvestrant (6.0%). Notably, grade 1-2 alopecia was reported in 11.0% of the



**Figure 3. Forest plot of progression-free survival hazard ratios by subgroups.** Subgroups for progression-free survival and their respective hazard ratios were represented for (A) patients in cohort 2: palbociclib plus fulvestrant versus capecitabine and (B) patients with wild-type ESR1 from cohort 1 + cohort 2: palbociclib plus endocrine therapy versus capecitabine. P values from Mann–Whitney test (continuous variables) and chi-square test (categorical variables). CI, confidence interval; CT, chemotherapy; ESR1, estrogen receptor 1; ET, endocrine therapy; MBC, metastatic breast cancer; ALL, all patients of Cohort 2 (Figure A) all patients Wild-Type ESR1 (Cohort 1 + cohort 2) (Figure B).

<sup>a</sup> Unadjusted Cox P value comparing palbociclib plus fulvestrant versus capecitabine in each subgroup.

<sup>b</sup> Unadjusted Cox P value comparing palbociclib plus endocrine therapy versus capecitabine in each subgroup.

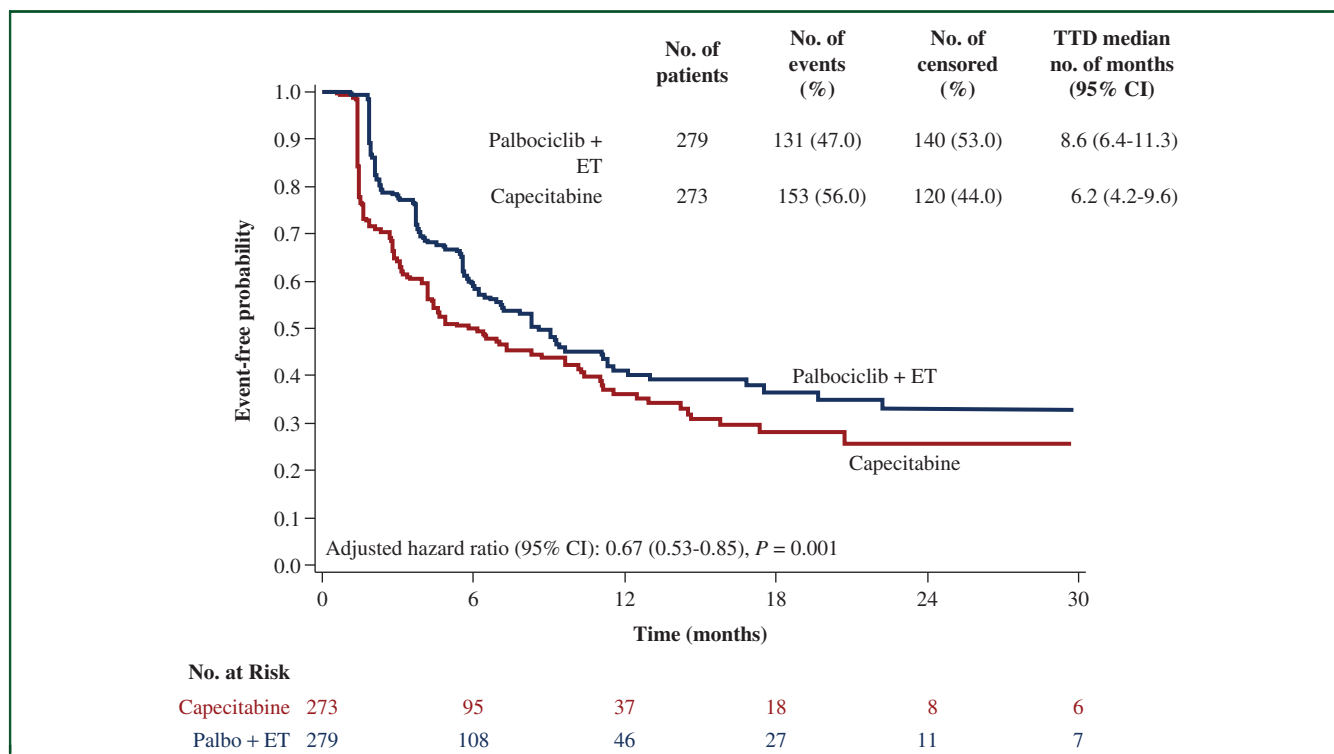
patients on palbociclib plus ET as opposed to 3.8% of the patients on capecitabine.

Serious AEs related to the study treatment were reported by 10.4% of the patients on capecitabine, 4.0% of the patients on palbociclib plus exemestane, and 3.4% of the patients on palbociclib plus fulvestrant.

A total of 46 patients on capecitabine (15.9%) dropped out due to AEs compared with 9 patients (6%) on palbociclib plus exemestane and 10 patients (6.7%) on palbociclib plus fulvestrant.

Of the 17 deaths observed during the study treatment, 11 were due to progressive disease; two serious AEs





**Figure 4. Time to deterioration based on EORTC core quality-of-life-C30\_global health status.**

The figure shows the median time to deterioration for the global health status from the European Organization for Research and Treatment of Cancer core quality-of-life-C30 (EORTC QLQ-C30). The adjusted hazard ratio was obtained using a stratified Cox proportional hazard model with treatment arm, the stratification factors (visceral, sensitivity to prior ET, prior CT for MBC), and number of involved sites as covariates.

CI, confidence interval; CT, chemotherapy; EORTC, European Organization for Research and Treatment of Cancer; ET, endocrine therapy; MBC, metastatic breast cancer; No., number; Palbo, palbociclib; TTD, time to deterioration.

occurred while patients were on palbociclib plus ET (pneumonitis and sepsis), and four occurred while the patients were on capecitabine (diarrhoea, general health status worsening, colitis, and sudden death). Diarrhoea, general health status worsening, and colitis were considered toxic deaths according to the investigators' assessments.

### Exploratory objectives

**Prognostic/predictive value of intrinsic BC subtypes.** Subtypes were obtained for 455 patients (94.4% of the 482 patients assessed) with metastatic (30%) or primary tumour tissue (70%) available (Table 1); 75.7% of cohort 2 and 79.6% of the wild-type *ESR1* patient population. Most patients (93.2%) had luminal tumours. Cohort 2 patients with luminal tumours showed a median PFS of 7.7 and 10 months with palbociclib plus fulvestrant and capecitabine, respectively (HR: 1.07; 95% CI: 0.77-1.49;  $P = 0.681$ ). Patients with non-luminal tumours ( $n = 20$ ) had a median PFS of 3.3 and 13.7 months with palbociclib plus fulvestrant and capecitabine, respectively (HR: 5.87; 95% CI: 1.60-21.55;  $P = 0.008$ ). Patients with wild-type *ESR1* luminal tumours presented a median PFS of 9.3 and 11.0 months with palbociclib plus fulvestrant and capecitabine, respectively (HR: 1.01; 95% CI: 0.77-1.33;  $P = 0.930$ ). Patients with non-luminal tumours ( $n = 25$ ) on palbociclib plus ET and capecitabine had a median PFS of 2.3 and 13.7 months,

respectively (HR: 7.36; 95% CI: 2.05-26.37;  $P = 0.002$ ) (Supplementary Figure S4, available at <https://doi.org/10.1016/j.annonc.2020.12.013>).

### DISCUSSION

The PEARL trial did not provide evidence of PFS superiority of palbociclib plus fulvestrant or of palbociclib plus ET in patients without *ESR1* mutations over capecitabine in AI-resistant MBC patients. However, it is worth noting that compared with capecitabine, palbociclib plus ET was associated with a significant delay in QoL deterioration, less treatment discontinuations due to AEs, and a lower proportion of patients with related serious AEs.

The initial study design of the PEARL trial was modified after some compelling evidence that *ESR1* mutations (present in up to 37% of patients pretreated with AIs) could produce resistance to additional AI therapy, but not to fulvestrant.<sup>15-17</sup> Since in the initial design the endocrine arm was exemestane plus palbociclib, we added a second cohort of patients in which the endocrine arm was fulvestrant plus palbociclib, to avoid the potential negative influence of *ESR1* mutations in patients treated with AIs. In fact, we identified 29% of *ESR1* mutations in the patients included in this trial. Of note, this modification was made before any results were available.

The combination of palbociclib plus fulvestrant has been approved by several regulatory agencies for the treatment

| Table 2. Summary of adverse events <sup>a</sup>  |                             |                              |                      |
|--|-----------------------------|------------------------------|----------------------|
| Variables  | Palbociclib plus exemestane | Palbociclib plus fulvestrant | Capecitabine         |
|  | n = 150                     | n = 149                      | n = 289              |
| <b>Adverse events according to NCI-CTCAE version 4.0, n (%)</b>                            | <b>147 (98.0)</b>           | <b>148 (99.3)</b>            | <b>286 (99.0)</b>    |
| Related  | 133 (88.7)                  | 128 (85.9)                   | 275 (95.2)           |
| Leading to study treatment discontinuation   | 9 (6.0)                     | 10 (6.7)                     | <b>46 (15.9)</b>     |
| <b>Most frequent related adverse events of grade ≥3 according to NCI-CTCAE version 4.0</b> |                             |                              |                      |
| Neutropenia  | <b>86 (57.4)</b>            | <b>83 (55.7)</b>             | 16 (5.5)             |
| Febrile neutropenia  | 2 (1.3)                     | 1 (0.7)                      | 4 (1.4)              |
| Hand/foot syndrome   | 0                           | 0                            | <b>68 (23.5)</b>     |
| Diarrhoea  | 2 (1.3)                     | 2 (1.3)                      | <b>22 (7.6)</b>      |
| Fatigue  | 2 (1.3)                     | 1 (0.7)                      | <b>16 (5.5)</b>      |
| Anaemia  | 1 (0.7)                     | 3 (2.0)                      | <b>10 (3.5)</b>      |
| <b>Serious adverse events, n (%)</b>   | <b>24 (16.0)</b>            | <b>19 (12.8)</b>             | <b>63 (21.8)</b>     |
| Related  | 6 (4.0)                     | 5 (3.4)                      | 30 (10.4)            |
| Leading to study drug discontinuation  | 5 (3.3)                     | 2 (1.3)                      | 12 (4.2)             |
| <b>On study treatment deaths<sup>b</sup>, n (%)</b>  | <b>5 (3.3)</b>              | <b>5 (3.4)</b>               | <b>7 (2.4)</b>       |
| Related to breast cancer   | 4 (2.7)                     | 4 (2.7)                      | <b>3 (1.0)</b>       |
| Other  | 1 <sup>c</sup> (0.7)        | 1 <sup>d</sup> (0.7)         | 4 <sup>e</sup> (1.4) |

Bold indicates the higher differences between treatment arms.

<sup>a</sup> Adverse events were coded according to the National Cancer Institute-Common Terminology Criteria for Adverse Events (NCI-CTCAE) version 4.0.

<sup>b</sup> On-study treatment death is defined as the death that occurs in the period between the first dose of the study treatment and 30 days after the last dose.

<sup>c</sup> Pneumonitis.

<sup>d</sup> Sepsis.

<sup>e</sup> Sudden death, diarrhoea, general health status worsening, and colitis (these last three were considered toxic deaths according to the investigators' assessments).

of patients with hormone receptor-positive/HER2-negative AI-resistant MBC based on the PALOMA-3 trial's results, which clearly showed the efficacy of palbociclib in delaying resistance to fulvestrant. However, it did not provide information on the potential benefit of palbociclib plus fulvestrant with respect to other available therapeutic options (i.e. everolimus plus ET or chemotherapy) in this specific patient population. Given the poor performance of the fulvestrant-placebo arm in the PALOMA-3 trial (median PFS: 4.6 months), many oncologists might prefer other alternatives. The PEARL trial included patients with relatively similar characteristics to those in the PALOMA-3 trial; however, the median PFS of ET plus palbociclib in the PEARL trial was somewhat lower. The most plausible explanation for this apparent discrepancy is the different characteristics of the population included in these two trials, with the patients in PEARL having a worse prognosis. Other studies exploring the combination of ET with CDK4/6 inhibitors as second-line therapy showed better results with a median PFS of 16.4 months in the MONARCH-2<sup>6</sup> and 25.3 months in the MONALEESA-3<sup>5</sup> trials. However, these data are not comparable with those of the PEARL study because the populations are quite different. For instance, only one prior line of ET was permitted and prior chemotherapy for MBC was not allowed in the MONARCH-2 and MONALEESA-3 studies, while there were no such limitations in the PEARL trial.

Considering the limited efficacy of palbociclib plus ET in this patient population (8- and 9.5-month PFS in the PEARL and PALOMA-3 trials, respectively), the high efficacy of the combination of ET and CDK 4/6 inhibitors in AI-sensitive MBC patients (with median PFS of around 2 years), and the demonstration of OS benefit in the only first-line trial that has reported this outcome so far,<sup>9</sup> the findings in the PEARL trial indirectly suggest that palbociclib combinations are less effective in pretreated MBC patients and should be used earlier in the treatment timeline, while capecitabine can be left for later lines. This statement agrees with the results from the meta-analysis by Giuliano et al.<sup>23</sup> This analysis showed that no chemotherapy regimen was significantly better than CDK4/6 inhibitors plus hormone therapies in the first- or second-line setting, supporting the treatment guideline recommendations for the use of ET plus targeted agents in earlier lines of treatment in women with hormone receptor-positive/HER2-negative MBC.

In addition, while the PEARL trial did not meet its co-primary objectives, it still provides evidence and suggestions for the management of hormone receptor-positive AI-resistant MBC. While patients' PFS with capecitabine and palbociclib plus ET were similar, toxicity with capecitabine was higher, and patients had earlier QoL deterioration with this chemotherapy. Thus, the endocrine combination could be the best choice for these patients. Capecitabine, albeit having higher AEs, remains an appropriate alternative where health care costs are restricted.

Efficacy results of the PEARL study were consistent across patient subgroups except for the small proportion of patients with genetically defined non-luminal tumours, for which capecitabine was associated with a significantly better PFS. However, these results should be interpreted with caution and further validated in independent cohorts, because the non-luminal population represented only 5.2% of the patients in the PEARL trial.

Potential limitations of the study are: (i) the capecitabine outcome was better than that initially anticipated (9 months compared with 6 months in the protocol assumptions); (ii) the open-label study design may lead to biased interpretations, e.g. more patients were censored before initiating the study treatment in the capecitabine arm than in the palbociclib plus ET arm (3.3% and 1.0%, respectively); (iii) the subtype classification for the exploratory objective was carried out in 70% of patients in the primary tumour, which might have changed in the metastatic disease in a proportion of patients. Finally, there are several strengths of the PEARL study that should be considered: (i) this is a well conducted academic, multicentre, international trial; (ii) the sample size with 601 patients is high; (iii) the prospective collection of plasma samples to assess *ESR1* mutations was conducted.

In conclusion, palbociclib plus ET did not improve PFS compared with capecitabine in patients with AI-resistant MBC; however, it was better tolerated and showed improved QoL.

## ACKNOWLEDGEMENTS

We thank the PEARL study steering committee and independent data monitoring committee members for their continuous support. We express our gratitude to Hosanna Soler-Vila for her contribution in style editing. We also thank all the patients included in this study and their families, as well as all the participating investigators and the support staff at each study site and at both the GEICAM and CECOG headquarters.

## FUNDING

This work was supported by two funding companies: Pfizer (that provided palbociclib and exemestane) and study grant (no grant number) and AstraZeneca (that provided fulvestrant). The trial sponsor is GEICAM Spanish Breast Cancer Group. The corresponding author had full access to all the data in the study and takes responsibility for the integrity of the data and the accuracy of the data analysis. The content is solely the responsibility of the authors.

## DISCLOSURE

MM has received consulting fees from AstraZeneca, Amgen, Taiho Oncology, Roche/Genentech, Novartis, PharmaMar, Eli Lilly, PUMA, Taiho Oncology, and Pfizer; speakers' honoraria from AstraZeneca, Amgen, Roche/Genentech, Novartis, Daiichi-Sankyo, and Pfizer; contracted research fees from Roche, Novartis, and PUMA. CZ has received consulting fees and speaker's honoraria from Roche, Novartis, Bristol-Myers Squibb, Merck Sharp & Dohme, Imugene, Ariad, Pfizer, Merrimack, Merck KGaA, Fibrogen, AstraZeneca, Tesaro, Gilead, Servier, Shire, Eli Lilly, and Athenex. His institution, Central European Cancer Center, Wiener Privatklinik Hospital, has received fees from Bristol-Myers Squibb, Merck Sharp & Dohme, Pfizer, AstraZeneca, and Merck KGaA. MRB has received speaker fees and advisory grants from Pfizer, Novartis, and Lilly. EC, who has a stock and other ownership interests from Lilly, has received travel and accommodation support from Roche, and her husband who has participated in consulting and advisory board activities with Bristol-Myers Squibb, Novartis, Celgene, Roche Pharma, Janssen, Amgen, Incyte, Abbvie, and Pfizer, has received travel and accommodation support from Celgene, Novartis, and Bristol-Myers Squibb. His institution has received research funding from Celgene, Janssen, Bristol-Myers Squibb, Novartis, Celgene, Roche/Genentech, Amgen, Pfizer, and Abbvie. GEICAM has received research funding from Roche/Genentech, Bristol-Myers Squibb, Novartis, Pfizer, Celgene, AstraZeneca, Merck Sharp & Dohme, Pierre Fabre, and Takeda. NT has received advisory board honoraria from AstraZeneca, Bristol-Myers Squibb, Lilly, Merck Sharp & Dohme, Novartis, Pfizer, Roche/Genentech, Bicycle Therapeutics, Taiho, Zeno Pharmaceuticals, and Repare Therapeutics and research funding from AstraZeneca, Bio-Rad, Pfizer, Roche/Genentech, Clovis, Merck Sharp & Dohme, and Guardant Health. MM has received travel and congress assistance support from Roche, Novartis, Pfizer, and Eisai. BB has received advisory board

honoraria from Genentech, Novartis, Merck Sharpe and Dohme, speakers' honoraria from Genentech, Eisai and she has received travel and congress assistance support from Pfizer. MM has received advisory board fees from Roche, Novartis, Pfizer, and Eisai. Her institution, Hospital Universitari Germans Trias i Pujol, Badalona, has received funding research from Roche, Pfizer, Novartis, Lilly, AstraZeneca, Eisai, and Kern. AA has received advisory board fees from Bayer, Spain. EA has received advisory board fees from Roche, Novartis, Pfizer, Lilly, Bristol-Myers Squibb, Genomic Health, and Nanostring. He has received travel support from Celgene. His institution, Hospitales Regional y Virgen de la Victoria, Málaga, has received funding research from Roche, Pfizer, Sysmex, Merck Sharp & Dohme, and Nanostring. EG-Y has received honoraria, travel support, and has participated in advisory boards for Pfizer, Roche, Novartis, and Eli Lilly. ÁG-Z has received investigational fees and travel support from Pfizer. JdelaH has received honoraria from AstrazZeneca, Pfizer, Novartis, Roche, and Agendia. MR has received honoraria from Novartis, Roche, and Pfizer. IÁ has received consulting or advisory board honoraria from AstraZeneca, Pfizer, Novartis, and Roche; speakers' honoraria from AstraZeneca, Pfizer, Novartis, Roche, and Eisai; travel and congress assistance support from AstraZeneca, Pfizer, Roche, and Eisai. CH has a stock from Pfizer and AstraZeneca, she was an employee of Pfizer during the study, and is an employee of AstraZeneca currently, where she holds a stock. MK has Pfizer stock and was an employee of Pfizer during the study. MC is employed by Pfizer and has the company's stock options. XH is employed by Pfizer and has the company's stock options. JAG-S has consultancy/speaker fees from Novartis, Celgene, Eli Lilly, Eisai, and AstraZeneca. He received travel support from Novartis, Roche, and Pfizer. His institution, Hospital Clínico Universitario San Carlos, received research funding from AstraZeneca. MG-G has received honoraria from Pfizer and Eisai and has participated in advisory boards of Genentech and Daiichi-Sankyo. He has received travel support from Pfizer, Novartis, Daiichi-Sankyo, Roche, and Kern. All remaining authors have declared no conflicts of interest.

A complete list of the PEARL trial collaborators is provided in the [Supplementary Appendix](#).

## DATA SHARING

The study is still ongoing and other secondary endpoints are yet to be analysed. Thus, the data cannot be shared at this point.

## REFERENCES

1. Finn RS, Martin M, Rugo HS, et al. Palbociclib and letrozole in advanced breast cancer. *N Engl J Med*. 2016;375:1925-1936.
2. Hortobagyi GN, Stemmer SM, Burris HA, et al. Updated results from MONALEESA-2, a phase III trial of first-line ribociclib plus letrozole versus placebo plus letrozole in hormone receptor-positive, HER2-negative advanced breast cancer. *Ann Oncol*. 2018;29:1541-1547.
3. Johnston S, Martin M, Di Leo A, et al. MONARCH 3 final PFS: a randomized study of abemaciclib as initial therapy for advanced breast cancer. *NPJ Breast Cancer*. 2019;5:5.

4. Cristofanilli M, Turner NC, Bondarenko I, et al. Fulvestrant plus palbociclib versus fulvestrant plus placebo for treatment of hormone-receptor-positive, HER2-negative metastatic breast cancer that progressed on previous endocrine therapy (PALOMA-3): final analysis of the multicentre, double-blind, phase 3 randomised controlled trial. *Lancet Oncol.* 2016;17:425-439.
5. Slamon DJ, Neven P, Chia S, et al. Phase III randomized study of ribociclib and fulvestrant in hormone receptor-positive, human epidermal growth factor receptor 2-negative advanced breast cancer: MONALEESA-3. *J Clin Oncol.* 2018;36:2465-2472.
6. Sledge GW Jr, Toi M, Neven P, et al. MONARCH 2: abemaciclib in combination with fulvestrant in women with HR+/HER2- advanced breast cancer who had progressed while receiving endocrine therapy. *J Clin Oncol.* 2017;35:2875-2884.
7. Tripathy D, Im SA, Colleoni M, et al. Ribociclib plus endocrine therapy for premenopausal women with hormone-receptor-positive, advanced breast cancer (MONALEESA-7): a randomised phase 3 trial. *Lancet Oncol.* 2018;19:904-915.
8. Sledge GW Jr, Toi M, Neven P, et al. The effect of abemaciclib plus fulvestrant on overall survival in hormone receptor-positive, ERBB2-negative breast cancer that progressed on endocrine therapy-MONARCH 2: a randomized clinical trial. *JAMA Oncol.* 2019;6:116-124.
9. Im SA, Lu YS, Bardia A, et al. Overall survival with ribociclib plus endocrine therapy in breast cancer. *N Engl J Med.* 2019;381:307-316.
10. Slamon DJ, Neven P, Chia S, et al. Overall survival with ribociclib plus fulvestrant in advanced breast cancer. *N Engl J Med.* 2020;382:514-524.
11. Blum JL, Jones SE, Buzdar AU, et al. Multicenter phase II study of capecitabine in paclitaxel-refractory metastatic breast cancer. *J Clin Oncol.* 1999;17:485-493.
12. Oshaughnessy JA, Blum J, Moiseyenko V, et al. Randomized, open-label, phase II trial of oral capecitabine (Xeloda) vs. a reference arm of intravenous CMF (cyclophosphamide, methotrexate and 5-fluorouracil) as first-line therapy for advanced/metastatic breast cancer. *Ann Oncol.* 2001;12:1247-1254.
13. Miller KD, Chap LI, Holmes FA, et al. Randomized phase III trial of capecitabine compared with bevacizumab plus capecitabine in patients with previously treated metastatic breast cancer. *J Clin Oncol.* 2005;23:792-799.
14. Talbot DC, Moiseyenko V, Van Belle S, et al. Randomised, phase II trial comparing oral capecitabine (Xeloda) with paclitaxel in patients with metastatic/advanced breast cancer pretreated with anthracyclines. *Br J Cancer.* 2002;86:1367-1372.
15. Schiavon G, Hrebien S, Garcia-Murillas I, et al. Analysis of ESR1 mutation in circulating tumor DNA demonstrates evolution during therapy for metastatic breast cancer. *Sci Transl Med.* 2015;7:313ra182.
16. Turner NC, Jiang Y, O'Leary B, et al. Efficacy of palbociclib plus fulvestrant (P+F) in patients (pts) with metastatic breast cancer (MBC) and ESR1 mutations (mus) in circulating tumor DNA (ctDNA). *J Clin Oncol.* 2016;15:512.
17. Chandrapaty S, Chen D, He W, et al. Prevalence of ESR1 mutations in cell-free DNA and outcomes in metastatic breast cancer: a secondary analysis of the BOLERO-2 clinical trial. *JAMA Oncol.* 2016;2:1310-1315.
18. Eisenhauer EA, Therasse P, Bogaerts J, et al. New response evaluation criteria in solid tumours: revised RECIST guideline (version 1.1). *Eur J Cancer.* 2009;45:228-247.
19. Aaronson NK, Ahmedzai S, Bergman B, et al. The European Organization for Research and Treatment of Cancer QLQ-C30: a quality-of-life instrument for use in international clinical trials in oncology. *J Natl Cancer Inst.* 1993;85:365-376.
20. Sprangers MA, Groenvold M, Arraras JI, et al. The European Organization for Research and Treatment of Cancer breast cancer-specific quality-of-life questionnaire module: first results from a three-country field study. *J Clin Oncol.* 1996;14:2756-2768.
21. van Hout B, Janssen MF, Feng YS, et al. Interim scoring for the EQ-5D-5L: mapping the EQ-5D-5L to EQ-5D-3L value sets. *Value Health.* 2012;15:708-715.
22. Koch GG, Schwartz TA. An overview of statistical planning to address subgroups in confirmatory clinical trials. *J Biopharm Stat.* 2014;24:72-93.
23. Giuliano M, Schettini F, Rognoni C, et al. Endocrine treatment versus chemotherapy in postmenopausal women with hormone receptor-positive, HER2-negative, metastatic breast cancer: a systematic review and network meta-analysis. *Lancet Oncol.* 2019;20:1360-1369.